



ATABEY CONCRETE PUMPING AND PLACING SOLUTIONS

PRODUCT RANGE

## Concrete Pumps

### Stationary Concrete Pumps

CP Series: CP 25-40-50-60-80-100

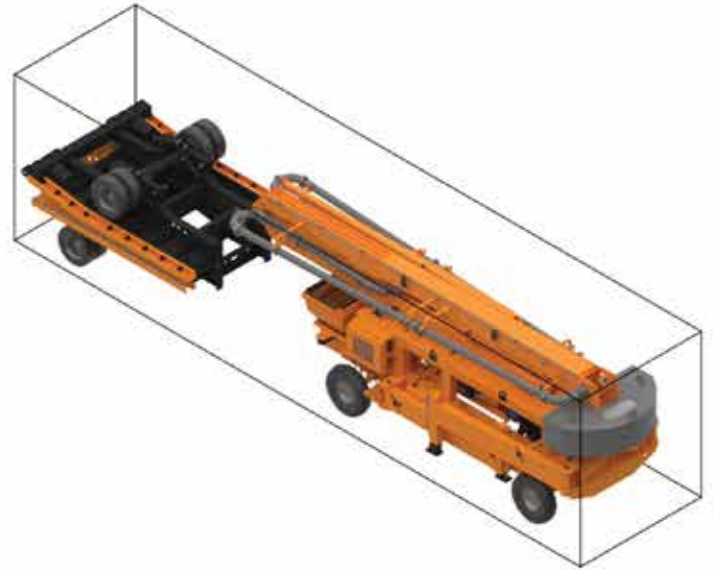


### 4x4 Drive Concrete Pumps

SCP Series: SCP 321 - 324



### FT 208 Folding-Frame Carrier Trailer



FT 208 Trailer can be folded for shipments in overseas containers. For overseas shipments, The Scorpion Pump and its carrier trailer can be shipped with the same 40' HC container.



# Atabey Product Range

## Concrete Placing Booms

### Rotary Mechanical Distributor

**BMP Series:** BMP 8 - 10 - 12 - 14 - 18



### Mini Spiders on Wheels

**ALZ Series:** ALZ 07 - 09



### Spider Booms

**B Series:** B 308 - 212 - 312 - 15 - 17 - 18 - 21



### 4-Wheel Carriage Options

### Elevation Tower Options



### Wheeled Spider Booms

**Striker Series:** BW 313 - 314



**BW Series:** BW 21 - 24



### Placing Boom Climbing Mast

**M Series:** M 21 - 24 - 26 - 29 - 32



#### 3-Elements Booms with R-Fold Design

21 m, 24 m, 26 m Horizontal Reach



#### 4-Elements Booms with Z-Fold Design

29 m, 32 m Horizontal Reach

## Concrete Delivery Equipment



**Pipeline Scissors**  
(slip-form pipeline connection)



**Hydraulic Diversion Valves**  
(with hand pump and/or external hydraulic line connection)



**Power Packs for Diversion Valves**  
(electric or diesel driven)



**Gate Valve**



**Pipeline DN125**  
Pipe Double Flanged



**Pipeline DN125**  
Elbow, 5.5°, 90°



**Elbow DN125**  
Elbow, 5.5°, 90°



**Reduction Piece**  
DN150 to DN125



**Coupling**  
DN125 Coupling, 90°, R=1000 mm



**Flexible Hoses**  
3000 mm Flexible Hoses



**Cleaning Sponge Ball**  
Pipes Cleaning Sponge Ball



**SC5-210 Seat Connection**



**SC5-200 Seat Connection**



**SC5-120 Seat Connection**



**LCS-110 Side Connection**



**LCS-120 Side Connection**



## Atabey Construction Equipment

Concrete is a key material for building new and modern cities, satellite cities, hydroelectric projects, bridges, tunnels, roads, and art installations.

A lot of equipment is used from concrete preparation through placement to the final stage, and it is extremely important to select the best solution without disturbing the concrete.

Based on these requirements, as Atabey Construction Equipment, we deliver the best solutions for pumping concrete and placing it at the final point, supported by our advanced production technology and facilities, and an energetic production and operations team.

By making the customer our number one priority after the sale, we achieve the highest repeat sales of any pumping equipment manufacturer. Hard work, determination, and a commitment to quality...

By offering ATABEY's leading-edge technology and reliable service, we have been striving to satisfy our customers for 15 years.

And it's these customers that we thank for allowing us to be a part of many successful and challenging projects.

Our goal is to help you increase productivity with reliable, efficient machines that deliver value to your business today and tomorrow.



## Scorpion Concrete Pumps





## Unique in the World!

The Scorpion concrete pump with hydraulic placing boom is often preferred for hydroelectric projects, bridges, tunnels, road and art constructions, industrial construction, depot-hangar constructions, and dam projects. Generates maximum savings in time and money with the pumping feature that turns the maximum diesel power into hydraulic pressure.

One of Scorpion's most important advantages is its efficient use of "boom reach". Thanks to its compact structure and 4x4 traction, Scorpion can get closer to the construction site, and the entire boom length can be used for access. Easily moved on construction sites by the remote-control system, and no need for a crane to load onto a truck for long-distance transportation. Also, all hydraulic systems are controlled from the control panel when the remote-control unit is not used.

**The 4x4 propulsion system** is particularly useful when terrain conditions are rough, on sites, and the unit needs to travel through narrow streets to reach the final concrete placement point.

### Unique Design:

The "stationary concrete pump with 4x4 traction system" is the most affordable and practical solution when the ready-mix concrete system is located far from the job site and the available ready-mixed concrete is costly.

### Wireless Remote Control System



4x4 Propulsion system

Closest and perfect positioning to the application area

It enables easier concrete pumping in rough terrain, tunnel work, an narrow spaces



## Concrete Pumps / Scorpion Series



We supply concrete pumps across four continents, from Asia to Africa, from Europe to America...



## CP Series: Stationary Concrete Pumps





## Stationary Concrete Pumps

Our own engineers design all Atabey Concrete Pumps.

The diesel engines (Kubota, Perkins, John Deere, Cummins) and the variable-flow hydraulic pump (Kawasaki, Japan) we use for our concrete pumps are leading brands in the international market.

The hydraulic pump with variable flow provides higher pressure when the concrete pipeline is blocked and returns to normal pressure when the blockage is opened.

With the **“Central-Automatic Greasing System”**, the equipment can be greased up regularly by the operator. This dramatically reduces the time and money lost due to operator error.

The standard wear parts used on our equipment are simple and readily available in international markets.

Today, multi-function processors are available and are beginning to be used in construction machinery.

But Atabey Construction Equipment does not change the simple ways of using the equipment and stays as “User Friendly Equipment”.



Electro-hydraulic control elements are designed and installed for easy access and replacement during part changes. Additionally, all electrical components are easily accessible by opening the control panel lids. Users can quickly address simple faults by replacing the necessary part, rather than the integrated unit.



Concrete pumping at 175 m height



**Economical solution for;**

- High rise buildings
- Long distance constructions
- Tunnel constructions
- Routes



# Concrete Pumps / CP Series



## B Series





## Ultra Light!

Ultra-light design hydraulic placing booms are made of High Strength Steel, which provides long life, light weight, and practical use. Distribution area / weight and outriggers clearance rates are unbeatable. Optimization in the design is to maximize the practicality.

Therefore, the users describe the equipment as “job-site friendly equipment. Twin Drive enables users to alter the power source. In the event of an electrical shutdown, concrete placement can continue without interruption, and short-term work can be completed.

Cost, time, and performance gains are achieved at significant levels on construction sites. Boom Construction is made from high-quality steel with high strength, flexibility, and weldability. It is lightweight, strong, and durable.

### **Split Frame (Detachable Boom Unit):**

A simplified split system that allows easy detachment of the boom unit. When the crane capacity is limited, the detachable boom and chassis can be lifted and moved separately.

### **Remote Control System**

### 4-Wheel Carriage Options

- With or without traction
- Hydraulic outriggers
- Remote control for self-travel & steering



12 meters  
4x4 walking hydraulic distributor



### Striker: New product compact design



## Concrete Distributors / B Series

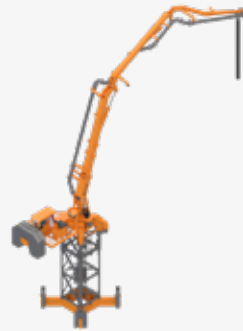
### Elevation Tower Options



Standart Outriggers  
(Freestanding)



Short-Outriggers with  
Ballast Weights  
(Freestanding)



Tower Base  
Anchored to Deck  
(Anchored)

### Camlica TV Tower Project



**The People's Salvation Cathedral** is the patriarchal cathedral of the Romanian Orthodox Church. It is also the world's tallest and largest Orthodox church by volume.



**The People's Salvation Cathedral**



Antalya Expo Tower Project



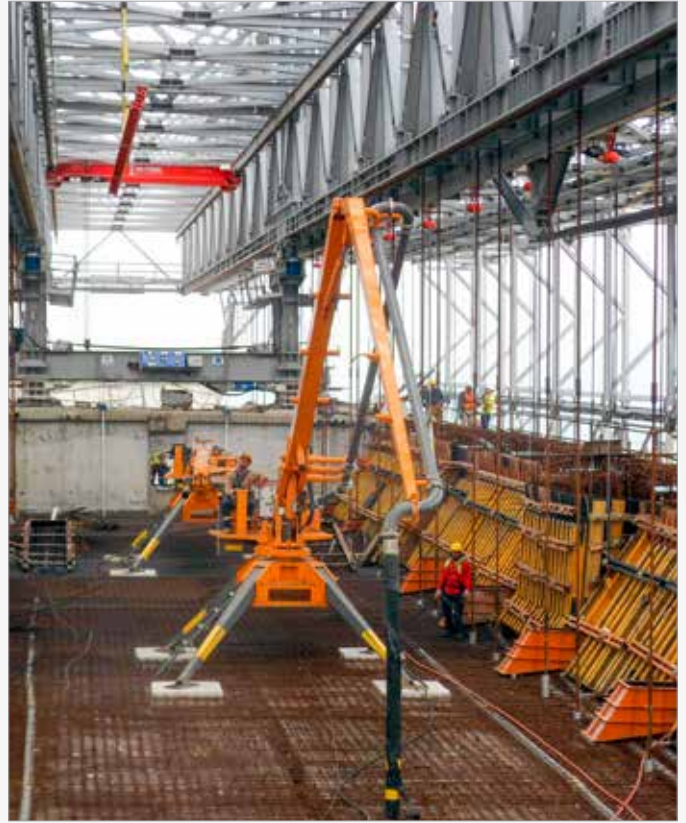
Eyiste Viaduct Project



B15 on TW14 Elevation Tower (India)



## Concrete Distributors / B Series



B Series: Used in high rise buildings, tunnel and bridge construction.



## M Series





## Optimum Design

Optimum design hydraulic placing booms are made of High-Strength Steel, providing long life, light weight, and practical use. Distribution area / weight–feet clearance rates are unbeatable.

Optimization in the design is to maximize the practicality. Therefore, users describe the equipment as site-friendly.

Twin Drive enables users to alter the power source. In the event of an electrical shutdown, concrete placement can continue without interruption, and short-term work can be completed.

Cost, time, and performance gains are achieved at significant levels on construction sites.

Boom Construction is made from high-quality steel with high strength, flexibility, and weldability. It is lightweight, strong, and durable.

### **Split Frame (Detachable Boom Unit):**

A simplified split system that allows easy detachment of the boom unit.

When the crane capacity is limited, the detachable boom and chassis can be lifted and moved separately.



32 Meters 4 Boom Climbing Type Concrete Distributors





## BW Series





## Converts Your “Stationary Pump” to “Mobile Pump”!

### BW 21 & BW 24

- Easily transported, thanks to the modular structure
- Remote control system
- The unique 4-wheel driven hydraulic placing boom in the world!
- Hydrostatic 4-wheel drive!



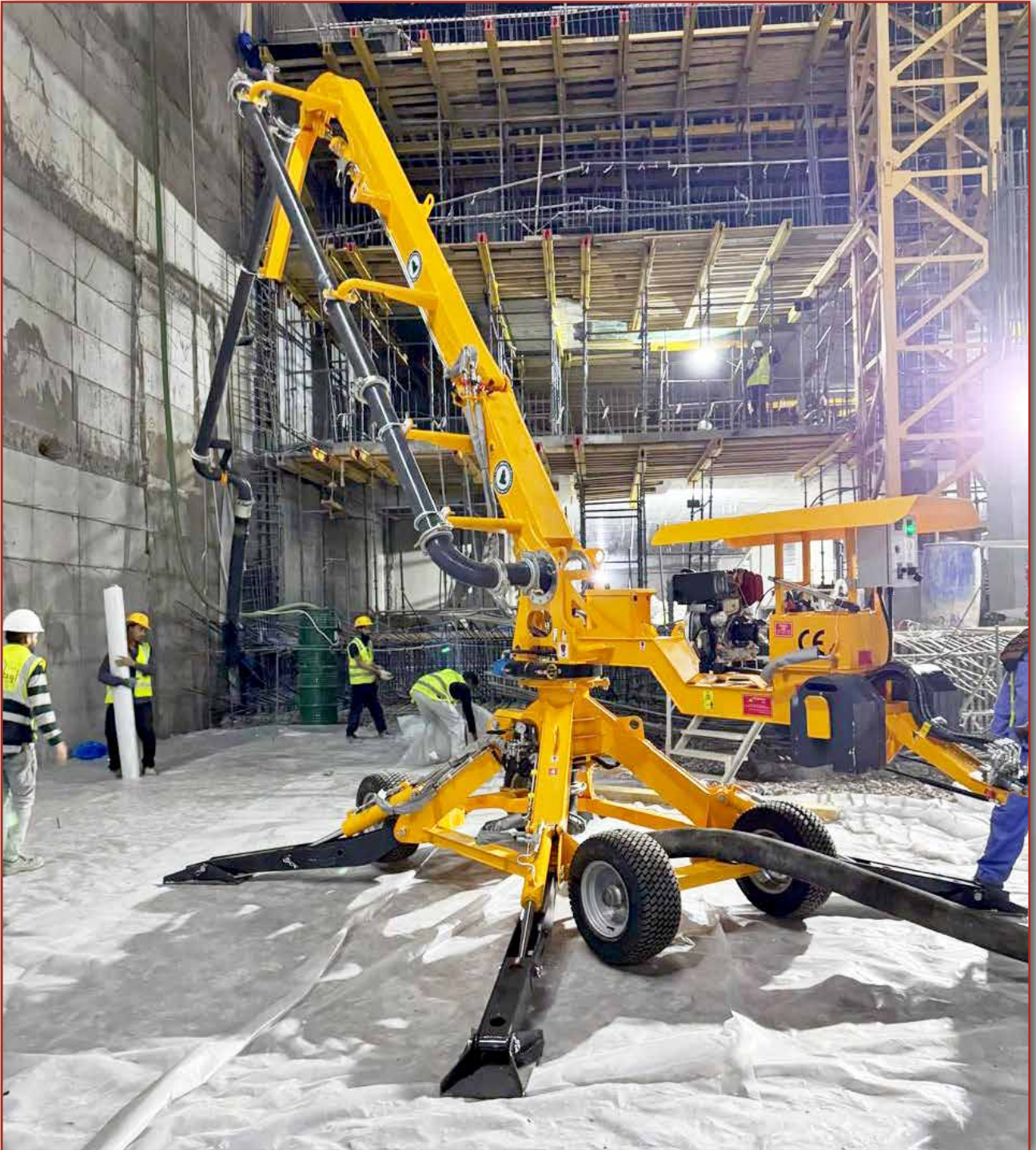


BW Series: 4x4 mobile concrete distributor, closer to perfect mold





## Alcanzador Series





## Lighter and more practical; can be positioned anywhere

- Alcanzador can be easily transported thanks to its modular structure.
- It is lightweight and can be positioned very practically with its 4-wheel chassis and tow-bar.
- Hydraulic lifting and closing legs help to reposition quickly without interrupting the concrete placement.
- Higher maneuverability with the steering system integrated into the drawbars
- All functions, such as slew turning, boom lifting/lowering, and lifting and lowering the opening outrigger-legs, are hydraulic
- There are three different power options as
  - electric motor
  - petrol engine
  - diesel engine
- In addition to the power options, a manual hydraulic pump is also standard on the machine as a backup or additional power option.
- With its unique structure, it is unrivaled in its ability to get through narrow spaces in construction sites, especially for points that are difficult to access.
- Provides cost savings in concrete placing works.



Concrete Distributors / ALZ Series



Top View

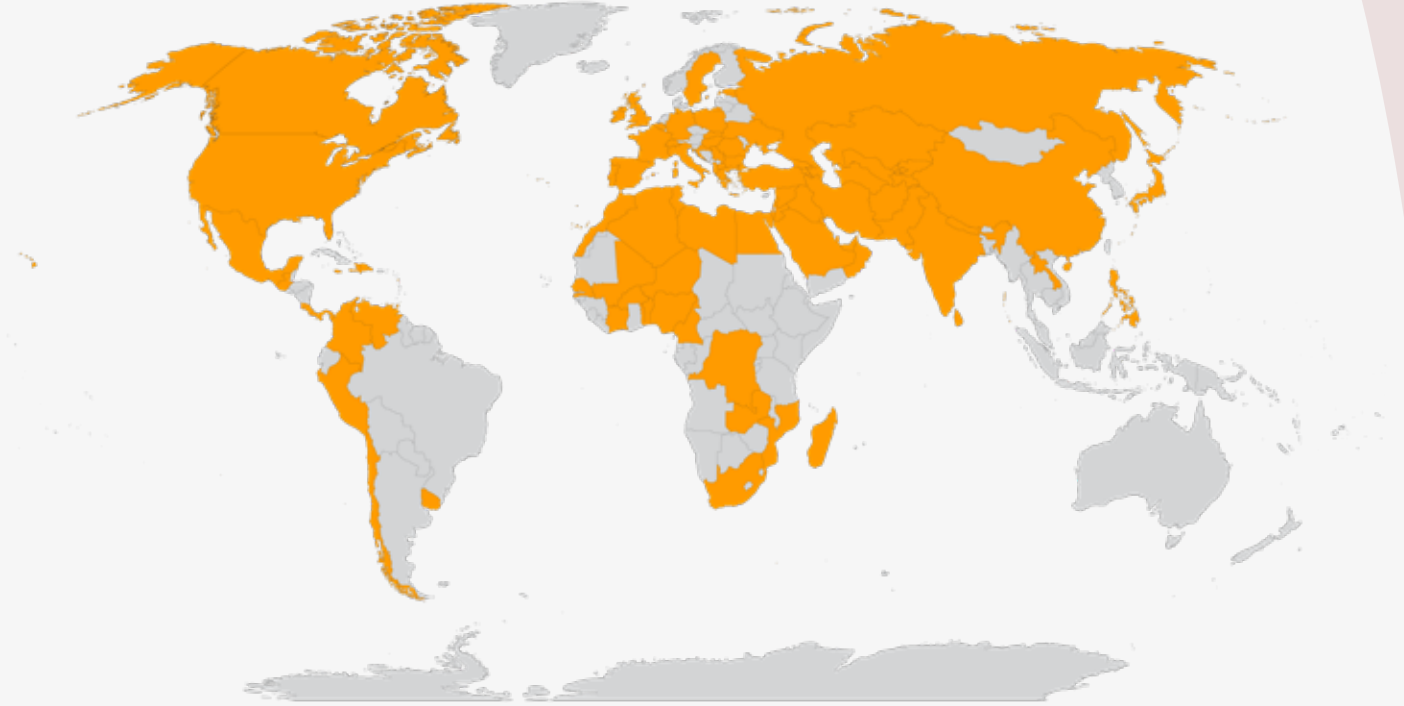
Side View





In addition to the power options, a manual hydraulic pump is also standard on the machine as a backup or as an additional power option

Atabey; Common language of concrete  
placer's in more than 80 countries



/AtabeyBetonMakinalari



/atabeyconstructionequipment



atabey construction equipment



## ATABEY CONSTRUCTION EQUIPMENT

Address: Keresteciler San. Sit. 4. Cad. No: 39 Kahramankazan / Ankara - TURKEY

Phone: +90 312 441 11 33 Fax: +90 312 441 58 88

[www.atabeymakina.com](http://www.atabeymakina.com)

[sales@atabeymakina.com](mailto:sales@atabeymakina.com)

